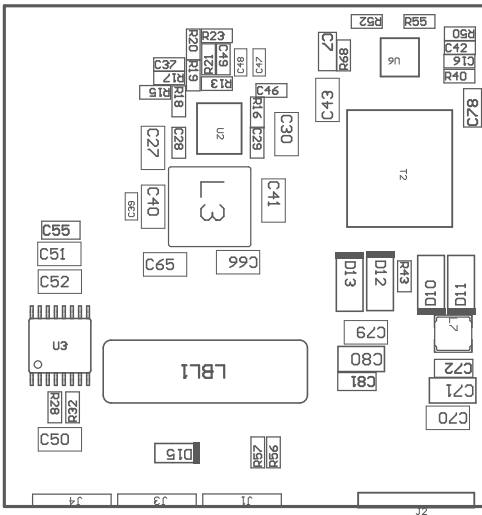


ZZI ■ Install label in silkscreened box after final wash. Text shall be 8 pt font. Text shall be per the Label Table in the PDF schematic.

Z22 ■ These assemblies are ESD sensitive, ESD precautions shall be observed.

Z23 ■ These assemblies must be clean and free from flux and all contaminants. Use of no clean flux is not acceptable.

224 ■ These assemblies must comply with workmanship standards IPC-A-610 Class 2, unless otherwise specified.

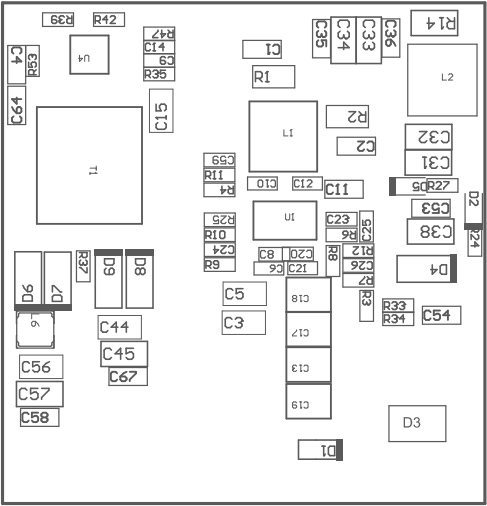


COMPONENTS MARKED 'DNP' SHOULD NOT BE POPULATED.

ASSEMBLY VARIANT:

PMP41125 BiasSupply

PCB VIEWED FROM TOP SIDE	BOARD #:	Bias Card	REV:	B	SUN REV:	Not in version control
	TID #:	PHP41125				
PLOT NAME = Top Assembly Drawing	GENERATED :	2/10/2025	11:15:07 AM	TEXAS INSTRUMENTS		



COMPONENTS MARKED 'DNP' SHOULD NOT BE POPULATED.

ASSEMBLY VARIANT: PMP41125 BiasSupply

PCB VIEWED FROM BOTTOM SIDE	BOARD #: Bias Card	REV: B	SUN REV: Not in version control
	TID #: PMP41125		
PLOT NAME = Bottom Assembly Drawing	GENERATED : 2/10/2025	11:15:07 AM	TEXAS INSTRUMENTS